

CHALLENGES OF MODERN architecture

Modern construction is characterized by transparency of construction, which is associated with openness and attachment to nature. Unfortunately, large glazing is also a significant amount of sunlight, which causes, among others:

- Excessive heat gain inside the building, resulting in deterioration of indoor environment parameters, including fatigue and concentration problems.
- Contrasts appearing on the screens of monitors lead to a glare effect, which makes the work much more difficult.
- Increased electricity consumption for ventilation and cooling.



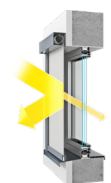
SUNSHADE efficiency



The lack of sunshades causes that 30-80% of the solar radiation gets into the room, depending on the used glazing.



The use of internal sunshades ensures that only a small part of the solar energy is reflected from the glass, while the remaining part is absorbed into the room, emitting heat, which leads to overheating.



Thanks to the use of an external sunshade, as much as 80-90% of the sun rays remain in front of the glass. The rays are reflected and dispersed, protecting rooms from overheating and dazzling people.

The offered screen systems provide a perfect balance between light and shade, and what is more, they can be a timeless decorative element of a building. Specialist fabrics used in screens, thanks to their reflective, permeable, and absorbent properties, stop the greenhouse effect inside the room, which helps to maintain a constant, comfortable temperature, while maintaining,

WHAT ARE THE BENEFITS of using screens?



SUNSHADE – screen type roller shutters perfectly protect rooms against overheating by improving comfort of work.



VISUAL COMFORT – screens provide adequate visual comfort, minimizing the effect of glare that may appear on the computer screen.



ENERGY SAVING – thanks to the use of this type of sunshade, we can significantly reduce expenditure on air conditioning in the summer season.



PRIVACY – screens protect interiors against the gaze of unwanted people, while maintaining good visibility outside the building (homogeneous transparency).



MODERN DESIGN – the variety of fabrics makes screens a modern decorative element, which will give each building an individual character.



PROTECTION – a properly selected screen system can also effectively protect the interior from the presence of insects.

L U X U R Y
ARKA[®]
WINDOWS & DOORS



NOVELTY

Screen type sunshade systems

SkyRoll



ARKA Luxuru Windows Doors
2915 Red Hill Ave #C107, Costa Mesa Ca 92626
tel. +1(949)922-3747
e-mail: ag@arkawindowsdoors.com
www.arkawindowsdoors.com



SkyRoll ZIP

The SkyRoll ZIP system is the latest generation product designed for shading rooms with large glazed surfaces. It is extremely innovative due to the use of technology borrowed from the zipper mechanism on the edges of the fabric. Specially designed two-part guide channels are thus directly integrated into the fabric, which guarantees maximum sealing and protection against insects. In addition, the solution used here ensures that the fabric is properly tensioned and firmly seated in the guide channel, which protects it especially against gusty winds. The product is available in front-mounted, flush-mounted or top-mounted variants. Depending on the version of the selected product, the offer includes construction elements made of aluminium sheet, PVC or extruded aluminium.

The use of the latter material ensures durability and strength for years of use, and also allows for painting in any RAL colour and matching the sunshade to the window joinery or building facade. Unlike other products of this type available on the market, the SkyRoll ZIP is equipped with a telescopic cap, which ensures simple and quick assembly, disassembly of the system and collision-free service access. Manual control is not possible. The maximum dimension is 5000 x 5000 mm (max. 16 m²).

Available three system variants – top-mounted, flush-mounted or front-mounted.



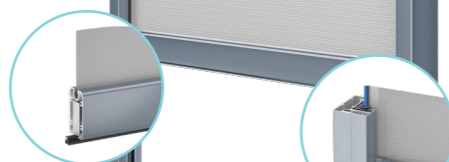
Thoughtful design makes the fabric not only roll up on the round reel but also on the adapter when closing, which ensures better winding.



Cap in closed position for easy assembly, disassembly and service access. The only such solution on the market!



Specially designed chamber underneath the seal in the bottom rail guarantees protection against insects.



The use of a zipper mechanism makes it possible to integrate the fabric directly into the guide channel, which ensures wind resistance and guarantees maximum tightness.

SkyRoll ZIP

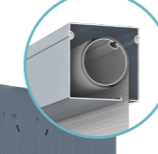
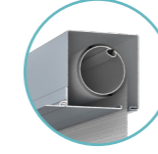
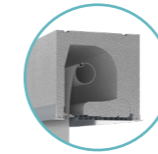


SkyRoll CLASSIC



SkyRoll CLASSIC

Available three system variants – top-mounted, flush-mounted or front-mounted.



This variant also uses a cap solution that can be locked in the closed position, facilitating assembly, disassembly and service access.



No direct integration of the fabric with the guide channel.

Structural elements such as guide channel, round reel or bottom rail have been adopted from the ZIP system, which allows for stock optimization.

SkyRoll CLASSIC is the most popular system in the family of screen type roller shutters, which is designed both for use in public buildings as well as in modern residential buildings. This product perfectly reduces solar radiation without sacrificing natural daylight, providing optimum protection against overheating. In this system there is no direct integration of the fabric with the guide channel. The product is available in front-mounted, flush-mounted or top-mounted variant. Depending on the version of the selected product, the offer includes construction elements made of aluminium sheet, PVC or extruded aluminium and were adopted mainly from SkyRoll ZIP system. This is extremely important for manufacturers, as it allows the use of most components such as guide channels, round reel or bottom rail and thus optimises stock levels. This solution is also equipped with a telescopic cap for the round reel, providing installers with fast assembly, disassembly, and non-invasive service access. This holder can also be used with roller shutters. Manual control is not possible. The maximum dimension is 5000 x 5000 mm (max. 16 m²).

SkyRoll ECO

SkyRoll ECO is a low-budget solution designed for less demanding investors. This product is perfect for buildings that need permanent sun protection, as well as on balconies, summerhouses or pergolas. The characteristic feature of the screens is the manual control with a spring system. It is also equipped with an intuitive mechanism ALU-CLICK for convenient closing and opening of the insect screen, which makes its use very simple and does not require a lot of effort. When closing it is enough to gently close the bottom endslat. The product is available in front-mounted or flush-mounted variant. Depending on the version of the selected product, the offer includes construction elements made of aluminium sheet or extruded aluminium. The SkyRoll ECO has a dedicated guide channel that is integrated into the fabric, additionally protecting the interior from insects. The endslat was adopted from the MKT insect screen system, which allows for the optimisation of stock levels. Thanks to the use of a telescopic cap in the round reel, the assembly and disassembly of the screen is very quick and easy, which is important during possible maintenance. As in the case of the ZIP and CLASSIC versions, this cap can also be used for roller shutters where SW40 reel is used or, thanks to adapters, also for SW50 and SW60 versions. The maximum dimension is 2000 x 2500 mm.

This solution is available in front-mounted and flush-mounted versions.



Similarly as in ZIP and CLASSIC versions this variant also uses a cap solution that can be locked in the closed position, facilitating assembly, disassembly and service access.



The system has a dedicated guide channel that is integrated with the fabric so that the cover can act as an insect screen.

The use of the ALU-CLICK mechanism provides convenient and simple operation.

SkyRoll ECO

